



Our *passion* is enclosures.



inoCASE + inoBOX

Produced from high quality stainless steel – for the protection of high value electronics.

inoCASE / inoCASEmini + inoBOX

The new benchmark for stainless steel industrial electronic enclosures – fo



r the protection of your equipment



Our passion is enclosures.

Seen in port operations.

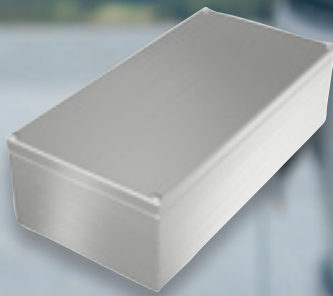
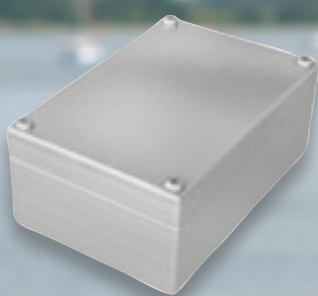
High standard ingress protection • inoCASE: DNV-GL approval, inoBOX: CSA & UL approval

inoCASE

- Space-saving single-channel technology with assembly of the lid and mounting outside of the enclosure interior
- Available in the qualities 1.4301/A2 (AISI 304) or 1.4404/A4 (AISI 316L)
- IP 66/67, optionally IP 69K

inoBOX

- Classic stainless steel enclosure – wall mounting through the enclosure base or with external mounting
- Available in the qualities 1.4301/A2 (AISI 304) or 1.4404/A4 (AISI 316L)
- IP 66



inoCASE / inoCASEmini + inoBOX

The new benchmark for stainless steel industrial electronic enclosures – for



Why ROLEC has two stainless steel series in its range at the same time:

The majority of stainless steel enclosures are usually fastened through holes in the enclosure base. Let us be frank: The user is exposed to the risk of leaks and damage to internal equipment. For this reason, we offer optional external mountings for all enclosures from the inoBOX range.

However, there must be something even better for the installation of high quality industrial electronics. And there is: inoCASE.

The A2 enclosure in this product range is equipped with the tried and tested ROLEC single-channel fastening system, which we actually also use with our aluminium enclosures. In this case, four welded screw channels are located in the enclosure corners. With the A4 version,

separate fastening channels are used. The whole thing costs slightly more, but it also provides your internal assemblies with perfect protection against dust and moisture.

Furthermore, in contrast to many other manufacturers we also offer high quality, metered full silicone seals. For perfect leak-tightness. Extensive corrosion and leak-tightness tests took place in our in-house test centre. We additionally had these certified by independent inspection authorities.

for the protection of your valuable equipment



Our *passion* is enclosures.



inoCASE 1.4301/A2

Space-saving single-channel lid and assembly fastening, outside the enclosure interior for perfect leak-tightness.



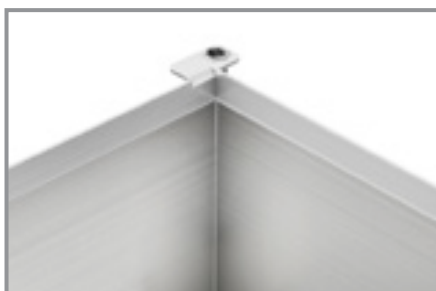
inoCASE 1.4404/A4

Assembly with separate fastening channels for perfect leak-tightness outside the enclosure interior.



inoBOX 1.4301/A2

More space inside the enclosure - without fastening channel.



inoBOX 1.4404/A4

The maximum in material resistance, with plenty of space inside the enclosure.

inoCASE / inoCASEmini + inoBOX

The new benchmark for stainless steel industrial electronic enclosures – for



A2 or A4? The application area decides.

1.4301/A2 is the most widely used stainless steel alloy in the world. Internationally, this quality predominantly bears the designation "304". Top quality then, even with the standard versions of the ROLEC stainless steel enclosure.

1.4404/A4, internationally customarily designated "316L", is even more resilient. This alloy contains molybdenum for the further enhancement of corrosion resistance, in particular to chloride and seawater. Applications in marine areas frequently demand the use of this high alloy type. inoCASE A4 enclosures have an 'Open Deck' approval per DNV-GL for this reason. The coastal atmosphere contains constituents including chloride, which precipitate on stainless steel parts due to moisture in the air. When this moisture evaporates, salt is left behind and this becomes concentrated due

to constant deposition. Interesting is that parts protected against rain are at particular risk of corrosion in marine areas because the unavoidable deposits are neither diluted nor washed away by rain. In addition to the right alloy, the surface characteristics also have a decisive influence on the corrosion resistance.

The enclosures in the inoBOX range are certified in accordance with UL, NEMA and CSA and for maritime applications, and are suitable for use in the chemical and petrochemical industry.



inoCASE mini

1.4301/A2 stainless steel

Technical data A2 mini

Enclosure

Stainless sheet steel,
edged and welded

Alloy 1.4301 (AISI 304) V2A,
sheet thickness 1.25mm

Lid screws

Stainless steel (V4A),
captive,
Allen screw

Temperature range

-40°C to +80°C

Fastening

Space-saving, single-channel lid
and assembly fastening,
outside the enclosure interior

Ingress protection

IP 66 / IP 67 EN 60529

Components

Fastening thread M4
in the lower part
Earthing bolt M4
in the lid

Seal

Silicone seal

Surface

Polished, grain: 240

Upon inquiry:

Assembly plates

Stainless steel 1.4301

Supporting rails

Stainless steel 1.4301

Ingress Protection

IP 69K / ISO 20653



Space-saving single-channel lid and assembly fastening,
outside the enclosure interior.



Silicone seal in the lid.

Machining

All forms of economical machining are possible,
in our CNC laser centre.

Special sizes

Can be produced on customer request
from just 50 units.

Cable glands

Metric cable glands and pressure equalisation
elements are available from stock.



Fastening lugs in the enclosure bottom for components.

inoCASE mini

1.4404/A4 stainless steel



Our passion is enclosures.

Technical data A4 mini

Enclosure

Stainless sheet steel,
edged and welded

Alloy 1.4404 (AISI 316L) V4A,
sheet thickness 1.25mm

Lid screws

Stainless steel (V4A),
captive,
Allen screw

Temperature range

-40°C to +80°C

Fastening

Space-saving, single-channel lid
and assembly fastening,
outside the enclosure interior

Ingress protection

IP 66 / IP 67 EN 60529

Components

Fastening thread M4
in the lower part
Earthing bolt M4
in the lid

Seal

Silicone seal

Surface

Polished, grain: 240

Upon inquiry:

Assembly plates

Stainless steel 1.4301

Supporting rails

Stainless steel 1.4301

Ingress Protection

IP 69K / ISO 20653



Separate fastening channels, outside the enclosure interior.



Silicone seal in the lid.

Machining

All forms of economical machining are possible,
in our CNC laser centre.

Special sizes

Can be produced on customer request
from just 50 units.

Cable glands

Metric cable glands and pressure equalisation
elements are available from stock.



Fastening lugs in the enclosure bottom for components.

inoCASE mini

1.4301/A2 stainless steel

Technical data A2 mini

Enclosure

Stainless sheet steel,
edged and welded

Alloy 1.4301 (AISI 304) V2A,
sheet thickness 1.25mm

Lid screws

Stainless steel (V4A),
captive,
Allen screw

Temperature range

-40°C to +80°C

Fastening

Space-saving, single-channel lid
and assembly fastening,
outside the enclosure interior

Ingress protection

IP 66 / IP 67 EN 60529

Components

Fastening thread M4
in the lower part
Earthing bolt M4
in the lid

Seal

Silicone seal

Surface

Polished, grain: 240

Upon inquiry:

Assembly plates

Stainless steel 1.4301

Supporting rails

Stainless steel 1.4301

Ingress Protection

IP 69K / ISO 20653



Space-saving single-channel lid and assembly fastening,
outside the enclosure interior.



Silicone seal in the lid.



Fastening lugs in the enclosure bottom for components.

Machining

All forms of economical machining are possible,
in our CNC laser centre.

Special sizes

Can be produced on customer request from
just 50 units.

Cable glands

Metric cable glands and pressure equalisation
elements are available from stock.

inoCASE mini

1.4404/A4 stainless steel



Our passion is enclosures.

Technical data A4 mini

Enclosure

Stainless sheet steel,
edged and welded

Alloy 1.4404 (AISI 316L) V4A,
sheet thickness 1.25mm

Lid screws

Stainless steel (V4A),
captive,
Allen screw

Temperature range

-40°C to +80°C

Fastening

Space-saving, single-channel lid
and assembly fastening,
outside the enclosure interior

Ingress protection

IP 66 / IP 67 EN 60529

Components

Fastening thread M4
in the lower part
Earthing bolt M4
in the lid

Seal

Silicone seal

Surface

Polished, grain: 240

Upon inquiry:

Assembly plates

Stainless steel 1.4301

Supporting rails

Stainless steel 1.4301

Ingress Protection

IP 69K / ISO 20653



Separate fastening channels, outside the enclosure interior.



Silicone seal in the lid.

Machining

All forms of economical machining are possible,
in our CNC laser centre.

Special sizes

Can be produced on customer request from
just 50 units.

Cable glands

Metric cable glands and pressure equalisation
elements are available from stock.



Fastening lugs in the enclosure bottom for components.

IC 070



ICC 072



IC 093



IC 132

**M**

Mounting plates

**T**

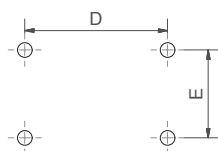
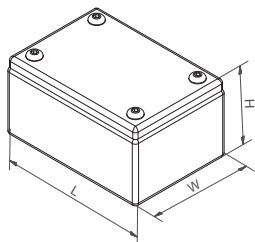
Supporting rail

**PLUS**Ingress Protection
IP 69KOrdering information **inoCASEmini A2** Stainless steel

Type	Mat. no	L	W	H	D	E	g	M	T	Plus
IC 070	173.070.000	100	70	50	78	48	453	●	●	●
IC 072	173.072.000	140	70	50	118	48	551	●	●	●
IC 074	173.074.000	180	70	50	158	48	649	●	●	●
IC 090	173.090.000	120	90	60	98	68	635	●	●	●
IC 092	173.092.000	160	90	60	138	68	757	●	●	●
IC 093	173.093.000	200	90	60	178	68	879	●	●	●

Ordering information **inoCASE A2** Stainless steel

Type	Mat. no	L	W	H	D	E	g	M	T	Plus
IC 110	173.110.000	140	110	60	117	85	1490	●	●	●
IC 112	173.112.000	200	110	60	177	85	1716	●	●	●
IC 130	173.130.000	160	130	60	137	105	1100	●	●	●
IC 132	173.132.000	220	130	60	197	105	1358	●	●	●
ICF 150	172.150.000	180	150	60	157	125	1230	●	●	●
IC 150	173.150.000	180	150	90	157	125	1530	●	●	●
ICF 152	172.152.000	260	150	60	237	125	2029	●	●	●
IC 152	173.152.000	260	150	90	237	125	2560	●	●	●
ICF 170	172.170.000	200	170	60	177	145	2190	●	●	●
IC 170	173.170.000	200	170	90	177	145	2392	●	●	●
ICF 172	172.172.000	280	170	60	257	145	2506	●	●	●
IC 172	173.172.000	280	170	90	257	145	2839	●	●	●
IC 200	173.200.000	230	200	120	207	175	3113	●	●	●
IC 202	173.202.000	330	200	120	307	175	3792	●	●	●
IC 250	173.250.000	280	250	120	257	225	3920	●	●	●
IC 252	173.252.000	380	250	120	357	225	4702	●	●	●
IC 300	173.300.000	330	300	120	307	275	4829	●	●	●
IC 302	173.302.000	430	300	120	407	280	5711	●	●	●



● Available
○ Not available

ICC 152



IC 300



Our passion is enclosures.

Ordering information **inoCASEmini A4** Stainless steel

Type	Mat. no	L	W	H	D	E	g	M	T	Plus
ICC 070	175.070.000	100	70	50	80	52	380	●	●	●
ICC 072	175.072.000	140	70	50	120	52	466	●	●	●
ICC 074	175.074.000	180	70	50	160	52	550	●	●	●
ICC 090	175.090.000	120	90	60	100	72	539	●	●	●
ICC 092	175.092.000	160	90	60	140	72	630	●	●	●
ICC 093	175.093.000	200	90	60	180	72	715	●	●	●

Ordering information **inoCASE A4** Stainless steel

Type	Mat. no	L	W	H	D	E	g	M	T	Plus
ICC 110	175.110.000	140	110	60	120	90	1020	●	●	●
ICC 112	175.112.000	200	110	60	180	90	1180	●	●	●
ICC 130	175.130.000	160	130	60	140	110	1100	●	●	●
ICC 132	175.132.000	220	130	60	200	110	1358	●	●	●
ICCF 150	174.150.000	180	150	60	160	130	1230	●	●	●
ICC 150	175.150.000	180	150	90	160	130	1530	●	●	●
ICCF 152	174.152.000	260	150	60	240	130	2029	●	●	●
ICC 152	175.152.000	260	150	90	240	130	1875	●	●	●
ICCF 170	174.170.000	200	170	60	180	150	1680	●	●	●
ICC 170	175.170.000	200	170	90	180	150	1750	●	●	●
ICCF 172	174.172.000	280	170	60	260	150	1960	●	●	●
ICC 172	175.172.000	280	170	90	260	150	2260	●	●	●
ICC 200	175.200.000	230	200	120	210	180	2580	●	●	●
ICC 202	175.202.000	330	200	120	310	180	3260	●	●	●
ICC 250	175.250.000	280	250	120	260	230	3340	●	●	●
ICC 252	175.252.000	380	250	120	360	230	4190	●	●	●
ICC 300	175.300.000	330	300	120	310	280	4230	●	●	●
ICC 302	175.302.000	430	300	120	410	280	5210	●	●	●



'Open Deck' approval for inoCASE-A4 enclosure
from Det Norske Veritas - Germanischer Lloyd

Technical data A2

Enclosure

Stainless sheet steel,
edged and welded

Alloy 1.4301 (AISI 304) V2A,
sheet thickness 1.2mm

Lid screws

Stainless steel (V2A),
captive,
cross slot

Temperature range

-40°C to +80°C

Ingress protection

IP 66 / EN 60529
NEMA 4X
IK08 EN 62262

Internal mountings

Fastening points for
accommodating mounting plates
and cross rails in the bottom
Earthing bolt M5 in the lid

Gasket

Polyurethane (PU)

Surface

Polished

Approvals

UL / CSA

Upon inquiry:

Assembly plates

Stainless steel 1.4301

Cross rail

Steel, galvanised

External mounting

Stainless steel 1.4404, (AISI
316), V4A

Screws

Hexagon screw
M5x10 A2
Captive Allen screw
M5x10 A2



Machining

All forms of economical machining are possible,
in our CNC laser centre.

Special sizes

Can be produced on customer request from
just 50 units.

Cable glands

Metric cable glands and pressure equalisation
elements are available from stock.

Technical data A4

Enclosure

Stainless sheet steel,
edged and welded

Alloy 1.4404 (AISI 316) V4A,
sheet thickness 1.2mm

Lid screws

Stainless steel (V4A),
captive,
cross slot

Temperature range

-40°C to +80°C

Ingress protection

IP 66 / EN 60529
NEMA 4X
IK08 EN 62262

Internal mountings

Fastening points for
accommodating mounting plates
and cross rails in the bottom
Earthing bolt M5 in the lid

Gasket

Polyurethane (PU)

Surface

Polished

Approvals

UL / CSA

Upon inquiry:

Assembly plates

Stainless steel 1.4301

Cross rail

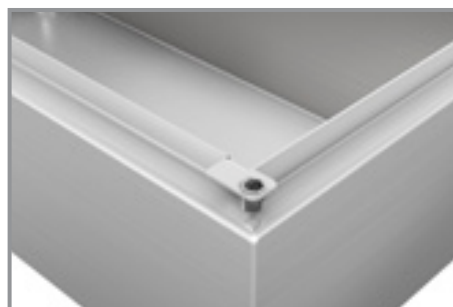
Steel, galvanised

External mounting

Stainless steel 1.4404, (AISI
316), V4A

Screws

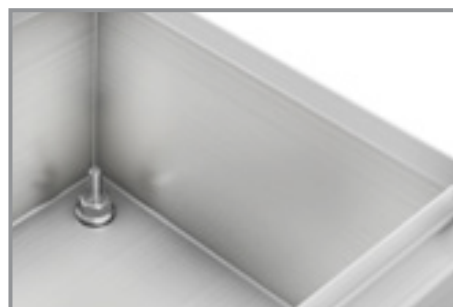
Hexagon screw
M5x10 A2
Captive Allen screw
M5x10 A2



Plenty of space inside. Press-fit sleeve for lid fastening.



Polyurethane gasket and earthing bolt in the lid.



Fastening lugs in the bottom for fastening internal assemblies.

IB 100



IBF 104



IB 150



IB 154



Mounting plates



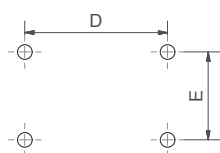
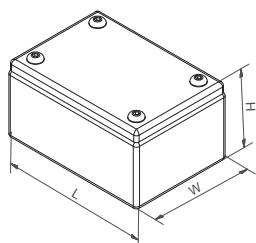
Supporting rail



Cross member

Ordering information **inoBOX A2** Stainless steel

Type	Mat. no	L	W	H	D	E	g	M	T	Q	A
IB 100	245.100.000	100	100	90	60	-	900	○	○	○	●
IB 102	245.102.000	150	100	90	110	-	1100	○	○	○	●
IB 104	245.104.000	200	100	90	160	-	1300	○	○	○	●
IBF 150	244.150.000	150	150	90	110	-	1300	●	●	●	●
IB 150	245.150.000	150	150	120	110	-	1700	●	●	●	●
IBF 154	244.152.000	300	150	90	260	-	2000	●	●	●	●
IBF 200	244.200.000	200	200	90	160	160	1800	●	●	●	●
IB 200	245.200.000	200	200	120	160	160	2300	●	●	●	●
IBF 202	244.202.000	300	200	90	260	160	2400	●	●	●	●
IB 202	245.202.000	300	200	120	260	160	2900	●	●	●	●
IB 204	245.204.000	400	200	120	360	160	3500	●	●	●	●
IB 252	245.252.000	350	250	120	350	250	3700	●	●	●	●
IB 300	245.300.000	300	300	120	260	260	3700	●	●	●	●
IB 301	245.301.000	400	300	120	360	260	4500	●	●	●	●



● Available
○ Not available

IBF 200



IBB 252



IB 300



Our *passion* is enclosures.

**A**

External mounting brackets

Ordering information **inoBOX A4** Stainless steel



Type	Mat. no	L	W	H	D	E	g	M	T	Q	A
IBB 100	247.100.000	100	100	90	60	-	900	○	○	○	●
IBB 102	247.102.000	150	100	90	110	-	1100	○	○	○	●
IBB 104	247.104.000	200	100	90	160	-	1300	○	○	○	●
IBBF 150	246.150.000	150	150	90	110	-	1300	●	●	●	●
IBB 150	247.150.000	150	150	120	110	-	1700	●	●	●	●
IBBF 154	246.152.000	300	150	90	260	-	2000	●	●	●	●
IBBF 200	246.200.000	200	200	90	160	160	1800	●	●	●	●
IBB 200	247.200.000	200	200	120	160	160	2300	●	●	●	●
IBBF 202	246.202.000	300	200	90	260	160	2400	●	●	●	●
IBB 202	247.202.000	300	200	120	260	160	2900	●	●	●	●
IBB 204	247.204.000	400	200	120	360	160	3500	●	●	●	●
IBB 252	247.252.000	350	250	120	350	250	3700	●	●	●	●
IBB 300	247.300.000	300	300	120	260	260	3700	●	●	●	●
IBB 301	247.301.000	400	300	120	360	260	4500	●	●	●	●



inoCASE & inoCASEmini and inoBOX

Chemical resistance of rustproof stainless steels A2 and A4

The information may change in practice; the effect of pure agents is rare, admixtures often strengthen or weaken the surface attack. Likewise, residues on the enclosure can also affect the conditions. The most assured way is to carry out testing under application conditions.

We are therefore unable to provide any guarantee in relation to this information.

Agents	Level of resistance	
	A2	A4
Waste water without sulphuric acid	1	1
Acetone, all conc.	1	1
Ethyl ether, boiling	1	1
Ethyl alcohol, all conc.	1	1
Ethyl acetate	1	1
Alum 10%, cold	1	1
Alum saturated solution, boiling	2	1
Aluminium acetate	1	1
Aluminium sulphate 10%, cold	1	1
Aluminium sulphate saturated, cold	2	1
Formic acid, cold	1	1
Ammonium carbonate	1	1
Ammonium nitrate	1	1
Ammonium sulphate, cold	1	1
Ammonium sulphite	1	1
Aniline	1	1
Benzine	1	1
Benzoic acid	1	1
Benzene	1	1
Beer	1	1
Hydrocyanic acid	1	1
Boric acid	1	1
Butyric acetate	1	1
Calcium bisulphite, cold	1	1
Calcium bisulfite, boiling	3	1
Calcium hydroxide 10-50%, cold	1	1
Calcium nitrate	1	1
Chlorine, dry	1	1
Chloroform, anhydrous	1	1
Sulphur, anhydrous	1	1
Chromic acid 10%, cold	1	1
Chromic acid 10%, boiling	3	2
Potassium cyan	1	1
Iron nitrate	1	1
Iron sulphate	1	1
Developer (photo)	1	1
Acetic acid, cold	1	1
Fatty acids, 150 °C	1	1
Liquid gases (propane, butane)	1	1
Formalin	1	1
Fruit juices	2	1
Tannic acid	1	1
Glycerine	1	1
Lime milk	1	1
Potassium bichromate 25%	1	1
Potassium bitartrate, cold	1	1
Potassium chlorate	1	1
Potassium hydroxide, potash lye	1	1
Potassium nitrate	1	1
Potassium permanganate	1	1
Potassium sulphate	1	1
Camphor	1	1
Carbon dioxide	1	1
Creosote	1	1

Agents	Level of resistance	
	A2	A4
Copper acetate	1	1
Copper arsenite	1	1
Copper nitrite	1	1
Copper sulphate	1	1
Latex	1	1
Linseed oil	1	1
Magnesium sulphate	1	1
Maleic acid	1	1
Molasses	1	1
Methyl alcohol	1	1
Lactic acid, cold	1	1
Lactic acid, all conc., boiling	3	2
Sodium aluminate	1	1
Sodium bisulphate, boiling	1	1
Sodium bisulphide, boiling	1	1
Sodium hydroxide, cold	1	1
Sodium carbonate (soda)	1	1
Sodium nitrate	1	1
Sodium perchlorate	1	1
Sodium phosphate	1	1
Sodium sulphate	1	1
Sodium sulphide	1	1
Sodium sulphite	1	1
Nickel sulphate	1	1
Nitrous acid	2	1
Oils (lubricant and vegetable oils)	1	1
Oxalic acid, 5%, cold	1	1
Phenol, boiling	2	1
Phosphoric acid up to 70%, cold	1	1
Potash	1	1
Mercury	1	1
Mercury amalgam	1	1
Mercury nitrate	1	1
Salicylic acid	1	1
Ammonia solution	1	1
Nitric acid up to 60%, cold	1	1
Sulphur (melted)	1	1
Sulphur dioxide	1	1
Carbon disulphide	1	1
Hydrogen sulphide	1	1
Sulphuric acid, saturated, 20 °C	1	1
Soap	1	1
Tar	1	1
Carbon tetrachloride, anhydrous	1	1
Trichloroethylene	1	1
Viscose	1	1
Water glass	1	1
Hydrogen peroxide	1	1
Wine	1	1
Tartaric acid	1	1
Zinc sulphate	1	1
Citric acid, 50%, boiling	4	1
Citric acid, saturated, cold	1	1
Sugar solution	1	1

1 = resistant 2 = conditionally resistant 3 = mildly resistant 4 = non-resistant



Our *passion* is enclosures.

WE PROTECT YOUR INNER VALUES.

inoCASE+inoBOX Stainless Steel Enclosures.



We protect your
inner values –
the inoCASE
image film



Personal service for everyone

We support and advise all our customers individually. Regardless of whether



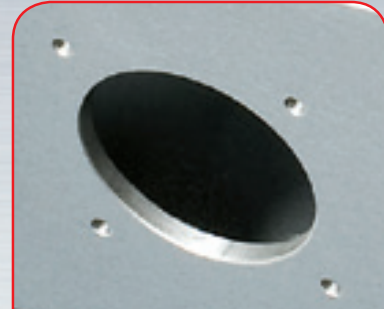
Expert advice

Everything begins with individual advice. We'll be pleased to support you with your project and find solutions for every requirement. Customer-specific solutions are our speciality.



Sample service

Test our products with your internal mounting. We'll be pleased to send you a sample enclosure for inspection with no strings attached.



Drilling

We'll manufacture every enclosure for you according to your exact specifications – whether they involve precise drilling or large tolerance.



Mil

Thanks to our modern production, we can quickly realise custom-fit cut-outs according to your exact specifications.



Powder coating

We can powder coat enclosures, command enclosures and suspension systems in any RAL colour you desire. Custom colours are of course also possible.



Painting

We can also paint all our enclosures in any RAL colour you desire. The application of primer and special colour structures are possible, as well.



Serigraphy

If desired, we can apply your logo and lettering or other markings using serigraph printing.



Digital

Digital printing is particularly suitable for low-volume orders and for realising complex patterns.



EMC enclosures

We offer our conFORM low-price standard EMC enclosure to protect your internal mounting against electromagnetic radiation. On request, we can also supply an EMC-compliant version of any other ROLEC enclosure.



Displays

We are able to offer the right made-to-measure display for all our enclosures – in varying sizes and degrees of robustness depending on the application.



Prototype design

We will visualise your ideas in the planning and development stage, making them tangible. As initial samples for tests or the basis for developing applications.



Special

If you need a plastic special material like ASA (Luran S) – no problem. We'll be pleased to realise it for you, too.

er for an individual item or series production.



ling

rn CNC produc-
and efficiently mill
d contours to match
tions.



Engraving

Our services also include engraving your logo and other elements, which we can of course perform in any colour you desire.



Lasering

We can process stainless steel enclosures and plates quickly and reliably according to your individual requirements thanks to our in-house lasering centre.



Assembly

Would you like to have all your components supplied already assembled? No problem. Our assembly team will be pleased to perform all assembly work on your behalf.



printing

rticularly worthwhile
s and for
terns or images.



Accessories

ROLEC's portfolio also includes matching front plates, mounting plate, supporting rails and terminal blocks as well as a range of cable glands, blanking plugs etc.



Membrane keypads

We'll be glad to design customised membrane keypads and attach them in accordance with your requirements.



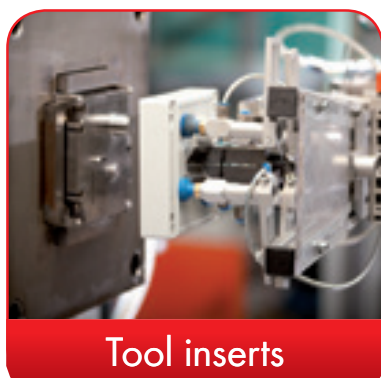
Digital print films

Custom accessories that we can produce and assemble for you also include display foils.



material

enclosure in a polycarbonate or problem. produce limited



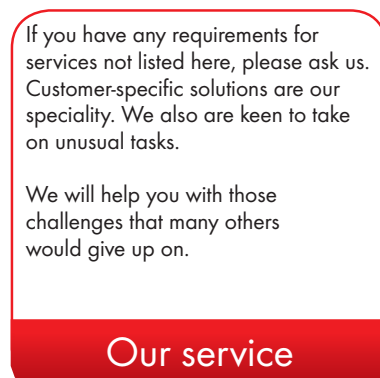
Tool inserts

Our standard tools can accommodate interchangeable inserts in the most frequently used interfaces – allowing modifications to be made. This means that special requests can be realised quickly, reliably and affordably.



Special tools

Our specialists will be pleased to discuss your customised enclosure design for enclosures and enclosure parts produced in large volumes. We can also realise the most unusual project designs quickly and according to your requirements.



Our service

If you have any requirements for services not listed here, please ask us. Customer-specific solutions are our speciality. We also are keen to take on unusual tasks.

We will help you with those challenges that many others would give up on.

The ROLEC product portfolio

Enclosures, mobile control enclosures, command enclosures, suspension

■ Aluminium enclosures

■ Stainless steel enclosures

■ Mobile control enclosures

■ Command enclosures

■ ABS enclosures

aluDISC



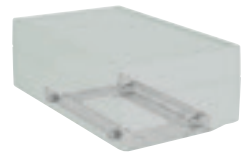
- Fastening of the enclosure without opening the lid
- Dimensions from 110x97x55 mm to 190x179x90 mm
- IP 66, IP 67/EN 60529

aluCLIC



- World-first quick-change enclosure
- Dimensions from 130x90x70 mm to 200x130x70 mm
- IP 66, IP 67/EN 60529

aluSMART



aluTWIN



- Two-chamber design with separate connection spaces
- Dimensions from 166x100x55 mm to 240x240x103 mm
- IP 66/EN 60529

conFORM



- Inexpensive and robust EMC enclosure
- Dimensions from 79x84x44 mm to 268x168x100 mm
- IP 66/EN 60529

aluKOM



taraPLUS



- Enhanced static characteristics
- Simple alignment of the system
- Simple cable installation
- IP 54/EN 60529

QUADRO



- Stable system for the greatest loads
- Highly durable
- Aluminium/spheroidal graphite iron combination
- IP 54/EN 60529

inoCASE A2 / A4

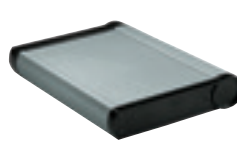


handCASE



- Highly robust hand held enclosures
- 4 versions, dimensions from 80x180x42.4 mm to 100x220x62.4 mm
- IP 66, IP 67/EN 60529

mobilCASE



- Profile enclosures
- 3 standard widths in 2 versions respectively
- 1-part profile IP 65
- 2-part profile P 54/EN 60529

aluDISPLAY

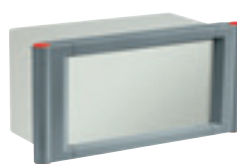


commandCASE



- Economical command enclosure with design handles
- Dimensions from 230x200x120 mm to 430x300x120 mm
- IP 66/EN 60529

topVISION



- Sheet steel body with aluminium framework
- Dimensions from 300x200x201 mm to 600x400x251 mm
- IP 66/EN 60529

aluFACE



technoDISC



- Round design enclosure made from LURAN
- Dimensions from 110x97x55 mm to 190x179x90 mm
- IP 66/EN 60529

technoCASE

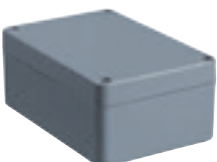


- Multi-variable enclosure produced from ABS and polycarbonate
- Dimensions from 80x80x60 mm to 360x240x160 mm
- IP 66, IP 67/EN 60529

technoBOX



polyKOM



- Robust, weather-resistant polyester enclosure
- Dimensions from 80x75x55 mm to 400x405x120 mm
- IP 65/EN 60529

polyTOP



- Modular enclosure from weather-resistant polyester
- Dimensions from 82x82x60 mm to 404x404x160 mm
- IP 66/EN 60529

Cable glands



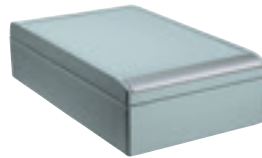
systems

■ Polyester enclosures

■ Suspension systems

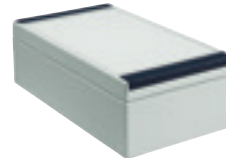
■ Cable glands

aluCASE



- Fastening of the enclosure without opening the lid
- Dimensions from 75x50x33 mm to 330x200x120 mm
- IP 66, IP 67/EN 60529

aluPLUS



- Design enclosure with technical finesse
- Dimensions from 125x84x59 mm to 260x160x90 mm
- IP 66/EN 60529

aluNORM



- Versatile combination universal enclosure
- Dimensions from 50x65x40 mm to 640x320x120 mm
- IP 66/EN 60529

profiPLUS 50 & 70



- Design suspension system with numerous components
- Equipotential bonding
- Simple installation and adjustment/alignment
- IP 54/EN 60529

inoCASE A2 / A4 mini



- Patented single-channel technology – more space inside
- Dimensions from 100x70x50 mm to 200x90x60 mm
- IP 66, IP 67/EN 60529

inoBOX A2 / A4



- High quality stainless steel enclosure made from A2 / A4
- Dimensions from 100x100x90 mm to 430x300x120 mm
- IP 66, IP 67/EN 60529

multiPANEL



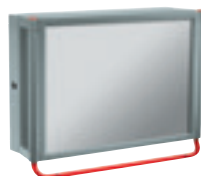
- Design command enclosure produced from aluminium profiles
- Dimensions from 150x150x70 mm to 800x800x130 mm
- IP 65 / EN 60529

profiPANEL



- Design command enclosure produced from aluminium profiles
- Dimensions from 150x150x60 mm to 800x800x300 mm
- IP 65 / EN 60529

multiVISION



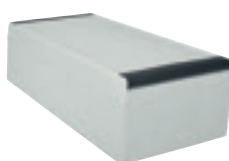
- 2 versions, numerous variation options
- To the precise millimetre per customer wishes
- Dimensions from 130x90x70 mm to 800x800x360 mm
- IP 65/EN 60529

starCASE



- Aesthetically shaped ASA design enclosure
- Dimensions from 120x90x50 mm to 280x170x60 mm
- IP 66/EN 60529

technoPLUS



- Premium enclosure produced from high quality LURAN
- Dimensions from 130x90x70 mm to 270x170x90 mm
- IP 66, IP 67/EN 60529

polyDOOR



- Stable polyester enclosure with folding lid
- Dimensions from 140x120x100 mm to 320x200x120 mm
- IP 66/EN 60529

- Range of materials, appropriate for the enclosures
- IP 54, IP 55, IP 65, IP 66, IP 68, IP 69K
- Further accessories such as blanking plugs, front plates, etc.

You can find detailed information about all products and our company on our website www.rolec.de

Welcome to the inventor of the industrial enclosure

A family business with a long tradition and aware of its responsibility –



The ROLEC principle: Technical perfection with top quality.

We use our inventiveness and great expertise to develop and produce enclosures, command enclosures and suspension systems for industrial applications.

Our company founders, Friedhelm and Matthias Rose, are pioneers of enclosure technology. Sophisticated design and maximum customer benefits are our primary focus. It is for this reason that we ensure our products are of top quality.

We are a medium-sized family company, steering our global business from the German headquarters in Rinteln an der Weser. ROLEC offers you industrial enclosures produced from aluminium, stainless steel, LURAN

and ABS, as well as command enclosures and suspension systems. We offer a wide range of standard sizes, as well as customer-specific tailored solutions.

Full service enclosure

One of our particular strengths is machining components to be ready for installation. Using our high-tech machine park, we modify the enclosures to be ready for installation according to our customers' wishes. We can deliver the finished products at short notice and „just in time“ on request. You'll learn more on the following pages.

closure

learn more about us



Our *passion* is enclosures.



Welcome to the ROLEC family

In 1967, Friedhelm Rose invented the first sealed aluminium enclosure for industrial applications. He subsequently went on to develop numerous innovations, which revolutionised the enclosure market. Together with his son Matthias and daughter Betty, he founded ROLEC in 1986. Today, some 100 employees work here to ensure pioneering new developments, supreme product quality and top customer service.

At home around the world

Quality Made in Germany – wherever you are in the world

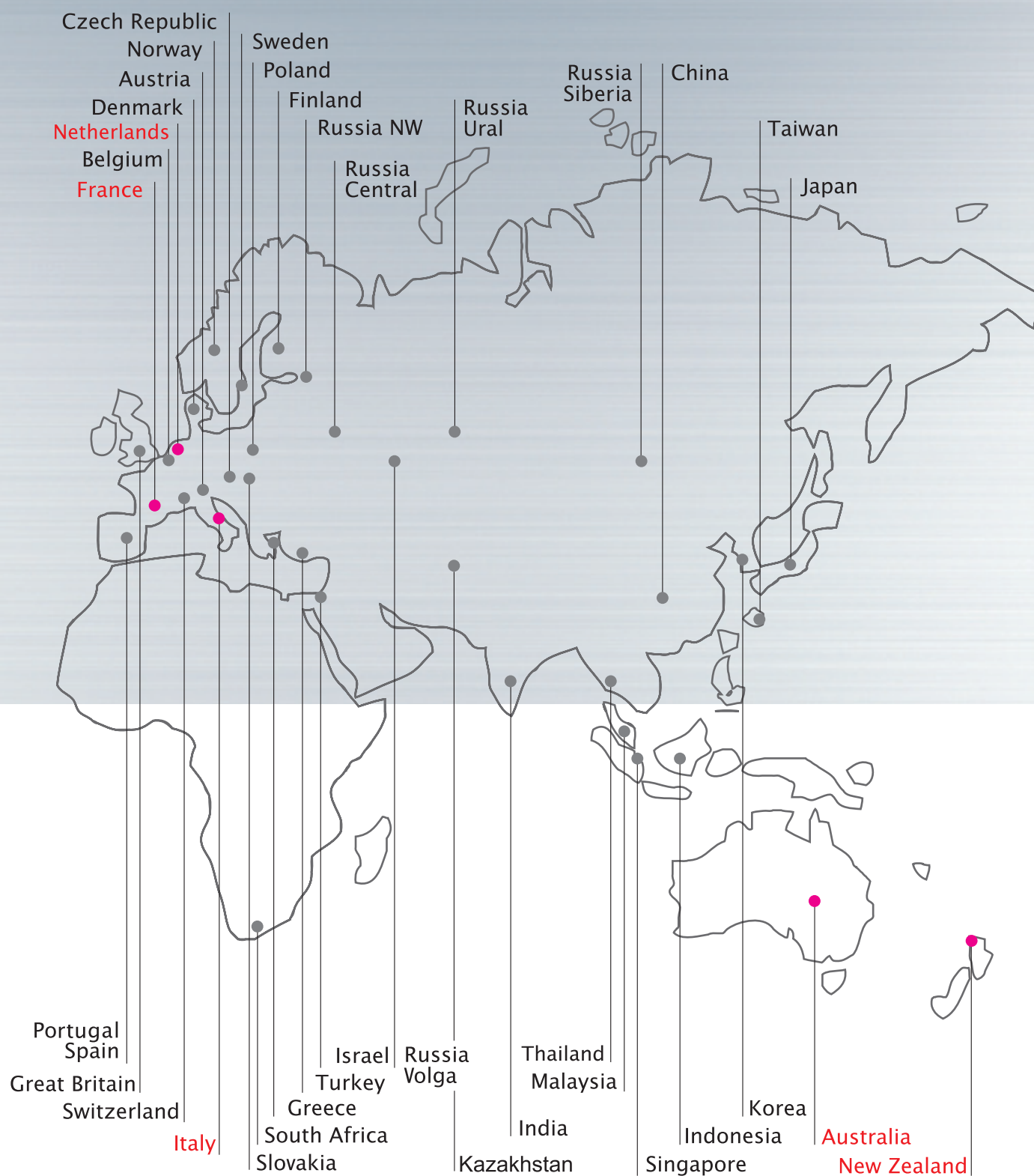


Global sales.

ROLEC is present with its products and services wherever you are in the world. In a number of countries, we have our own subsidiaries. In others, we cooperate with long-standing partners. And if you cannot find your country on the map, simply contact us at our headquarters in Germany. We'll be pleased to hear from you!

● = ROLEC subsidiaries

● = Distribution partner





Our *passion* is enclosures.



ROLEC
Gehäuse-Systeme GmbH
Kreuzbreite 2
D-31737 Rinteln

Phone +49 (0) 5751 4003-0
Fax +49 (0) 5751 4003-50
info@rolec.de
www.rolec.de

