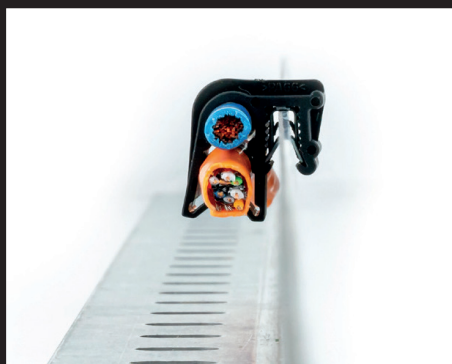
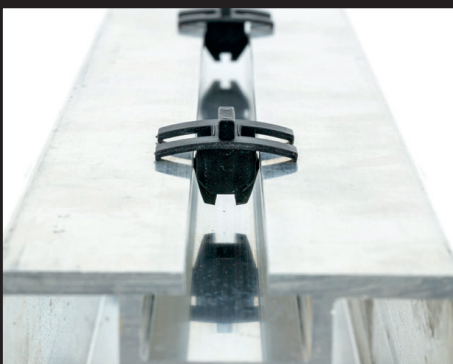




# Cable management solutions for the solar industry



# SOLAR CLIPS



**ASKC1**

Solar clips are a time-saving solution when managing cables for solar panels. The clips are quick and easy to use without the use of tools. Boxco supplies three types of clips that are suitable for different solar applications. Our clips are made of plastic (polyamide 6.6 HS) and are impact, heat and weather resistant and robust.

**Which solar clip do you need?**

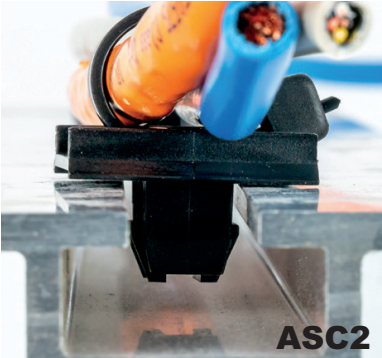
Solar clips are ideal for attaching cables, wires and tubes to a profile. To choose the right type of solar clip, you need to take into account the dimensions of the profile. The types ASC1 and ASC2 can be mounted, in combination with a cable tie, in a M8 or M10 aluminium profile. The type of clip ASKC1 can be mounted on a profile without a cable tie. This clip is designed for the attachment of two cables with a diameter of 6 mm.

**Material specifications:**

- Plastic clip: Polyamide 6.6 HS, black, impact resistant, heat resistant, UV resistant
- Cable tie: Polyamide 6.6 HS, black, impact resistant, heat resistant, UV resistant
- Temperature range: -40 °C up to +120 °C (short time 140 °C)
- Metal clamp material: Spring steel, hardened coated surface to ensure protection against corrosion



**ASC1**



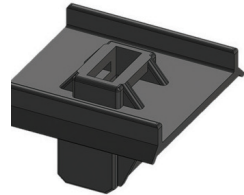
**ASC2**



**ASKC1**



**ASC1**



**ASC2**

**TYPES OF SOLAR CLIPS**

Fixation clip type	Mounting of clip	Mounting of cable	Supplied with cable tie
ASKC1	Profile thickness of 0.7 - 3.0 mm	2x 6.0 mm, without cable tie	No
ASC1	M10 / 7.0 mm deep	Fixation with cable tie	No
ASC1 *	M10 / 7.0 mm deep	Fixation with cable tie	Yes
ASC2	M8 / 6.9 mm deep	Fixation with cable tie	No
ASC2 *	M8 / 6.9 mm deep	Fixation with cable tie	Yes

\* = Supplied with cable tie: 200 x 4.8 mm (PA 6.6 / black)



## EDGE CLIPS



**AKC15**

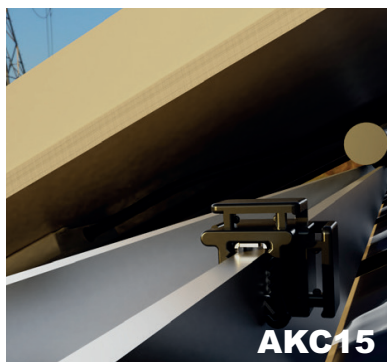
Edge clips are easy to mount fixation clips that can be mounted on a profile or in a vehicle. Edge clips offer a safe and reliable option for attaching and guiding your cables, wires or tubes. Boxco supplies high-quality plastic edge clips made of polyamide 6.6 HS. The clips are robust and are impact, heat and weather resistant.

### Which edge clips do you need?

To choose the right type of edge clip, you should take into account the profile thickness and the way in which the cable will be mounted. Boxco offers edge clips for different applications: with the cable tie fastening on top or on the side of the clip and edge clips where the cable tie can be attached right-angled on or in longitudinal direction of the profile.

### Material specifications:

Plastic clip:	Polyamide 6.6 HS, black, impact resistant, heat resistant, UV resistant
Cable tie:	Polyamide 6.6 HS, black, impact resistant, heat resistant, UV resistant
Temperature range:	-40 °C up to +120 °C (short time 140 °C)
Metal clamp material:	Spring steel, hardened coated surface to ensure protection against corrosion



**AKC15**



**AKC19**

### TYPES OF SOLAR CLIPS

Fixation clip type	Profile thickness (in mm)	Cable tie fastening	Positioning of cable tie in relation to profile
AKC1 *	0.7 - 3.0	Top side	Right-angled on the profile
AKC2 *	0.7 - 3.0	Side	Right-angled on the profile
AKC3 *	0.7 - 3.0	Top side	Longitudinal direction of the profile
AKC5 *	0.7 - 3.0	Side	Longitudinal direction of the profile
AKC15	0.7 - 3.0	Top and side	Four directions
AKC17 **	0.7 - 3.0	Top side	Right-angled on the profile
AKC18 **	0.7 - 3.0	Side	Right-angled on the profile
AKC19 **	0.7 - 3.0	Top side	Longitudinal direction of the profile
AKC20 **	0.7 - 3.0	Side	Longitudinal direction of the profile
AKC107 *	3.0 - 6.0	Top and side	Four directions
AKC4 *	3.0 - 6.0	Top side	Longitudinal direction of the profile
AKC87 *	3.0 - 6.0	Top side	Longitudinal direction of the profile
AKC88 *	3.0 - 6.0	Top side	Right-angled on the profile
AKC89 *	3.0 - 6.0	Side	Right-angled on the profile
AKC90 *	3.0 - 6.0	Side	Longitudinal direction of the profile

\* = Also available with cable tie: 200 x 4.8 mm (PA 6.6 / black)

\*\* = Delivered with integrated cable tie: 160 x 3.6 mm (PA 6.6)



## EDGE CLIPS FOR CORRUGATED TUBING



Edge clips for corrugated tubing offer a safe and reliable option for attaching and guiding corrugated tubing. You can easily mount the clips on a profile or in a vehicle without additional tools or glue. Boxco supplies high-quality mounting clips. This makes it easy to select a clip that is suitable for your intended application(s). Our edge clips for corrugated tubing are made of plastic (polyamide 6.6 HS) and have a good robustness and are impact, heat and weather resistant.

### Which edge clips do you need?

Our edge clips for corrugated tubing are designed for guiding corrugated tubes on a plastic or metal profile. To choose the right type of edge clip for corrugated tubing, you should take into account the outer diameter of the corrugated tube, the profile thickness and the way in which the corrugated tube will be mounted

### Material specifications:

Plastic clip: Polyamide 6.6 HS, black, impact resistant, heat resistant, UV resistant  
 Temperature range: -40 °C up to +120 °C (short time 140 °C)  
 Metal clamp material: Spring steel, hardened coated surface to ensure protection against corrosion

### EDGE CLIPS FOR CORRUGATED TUBING

Fixation clip type	Profile thickness (in mm)	Cable tie fastening	Position of corrugated tube in relation to profile	Direction of corrugated tube in relation to profile
AKC24	0.7 - 3.0	4.5	Top side	Longitudinal direction of the profile
AKC21	0.7 - 3.0	7.5	Top side	Longitudinal direction of the profile
AKC32	0.7 - 3.0	17.0	Top side	Longitudinal direction of the profile
AKC30	3.0 - 6.0	4.5	Top side	Longitudinal direction of the profile
AKC12	3.0 - 6.0	13.0	Top side	Longitudinal direction of the profile
AKC23	0.7 - 3.0	4.5	Top side	Right-angled on the profile
AKC22	0.7 - 3.0	10.5	Top side	Right-angled on the profile
AKC31	0.7 - 3.0	13.0	Top side	Right-angled on the profile
AKC35	0.7 - 3.0	2x 10.0	Side	Longitudinal direction of the profile
AKC25	0.7 - 3.0	4.5	Side	Longitudinal direction of the profile
AKC26	0.7 - 3.0	10.0	Side	Longitudinal direction of the profile
AKC36	0.7 - 3.0	13.0	Side	Longitudinal direction of the profile
AKC28	3.0 - 6.0	4.5	Side	Longitudinal direction of the profile
AKC29	3.0 - 6.0	7.5	Side	Longitudinal direction of the profile
AKC27	3.0 - 6.0	10.0	Side	Longitudinal direction of the profile



For more information visit  
**[www.boxco.se](http://www.boxco.se)**



**BOXCO**

Boxco AB  
Gjutmästare Rosbergs väg 8  
176 69 Järfälla

Tel: 08-580 210 10  
E-post: [info@boxco.se](mailto:info@boxco.se)