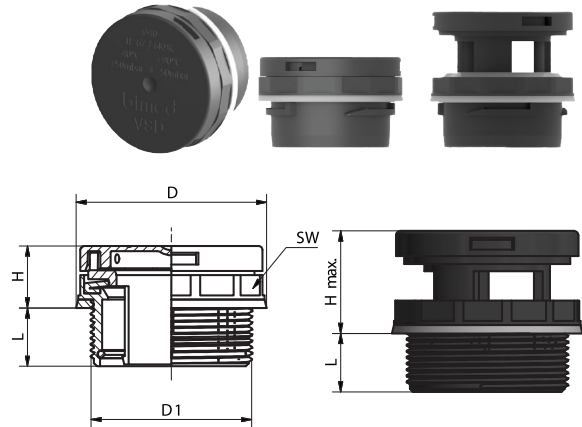


## SICHERHEITS-DAE / M / SAFETY PBE / M

The new safety pressure compensation element in size M40x1.5mm is like a conventional pressure equalization element that ensures continuous ventilation of the battery packs.

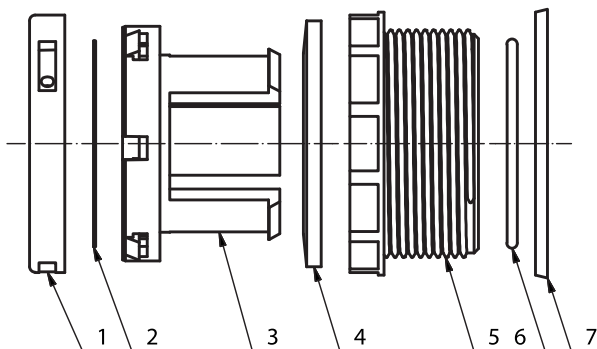
If a battery fire occurs our safety pressure compensation element also acts as a pressure relief valve and a strong and rapidly increasing pressure can be dissipated quickly.

Color: RAL9005



Article	Membrane Type	Air Flow $\Delta P=70\text{mbar}$ l/h (mind.)	Water Intrusion Pressure mbar	Burst Pressure mbar	Air Flow after Opening l/h	Thread AG	SW	L (mm)	H (mm)	H max (mm)	D (mm)	D1 (mm)
M40PLCT150	PTFE	400	>150	150±50	540.000	M40x1,5	45	15,0	13,6	28,1	47,0	40,0
M40PLCT350	PTFE	400	>150	350±100	540.000	M40x1,5	45	15,0	13,6	28,1	47,0	40,0

<b>Material:</b>	Polyamid 66 (GF)	<b>Material:</b>	Polyamide 66 (GF)
Membran:	PTFE	Membrane:	PTFE
Dichtung:	VMQ	Sealing:	VMQ
<b>Einsatztemperatur:</b>	-40°C bis +90°C	<b>Operating Temperature:</b>	-40°C bis +90°C
<b>Schutzart:</b>	IP67 / IP6K9K	<b>Protection Class:</b>	IP67 / IP6K9K
<b>Hinweis:</b>	Druckausgleichselement mit Sicherheitsfunktion. Vollständige Öffnung bei zu hohem Druck. Speziell für Li-Ionen-Akku-Systeme.	<b>Note:</b>	Pressure Balance Element with safety device. Complete opening in case of too much pressure. Especially for li-ion battery systems.



### IP 67 / IP6K9K

No.	Qty.	Part Name	Norm	Material
1	1	Cap	-	Polyamide 66 (GF)
2	1	Membrane	-	PTFE
3	1	Insert	-	Polyamide 66 (GF)
4	1	Sealing Ring	-	VMQ
5	1	Body	EN 60423	Polyamide 66 (GF)
6	1	Snap Ring	-	Stainless Steel
7	1	Sealing	-	VMQ

We certify that the values provided are as accurate as possible. Use of these values, however, remains the sole responsibility of the customer and cannot in any way substitute for testing the product under real conditions of use. The user must assess whether this product is suitable for a particular use. BOXCO shall not be held responsible for any loss or anomaly resulting from the correct or incorrect use of this product.